

TATES

Residential Sales & Lettings



Edith Road, London W14 9BA

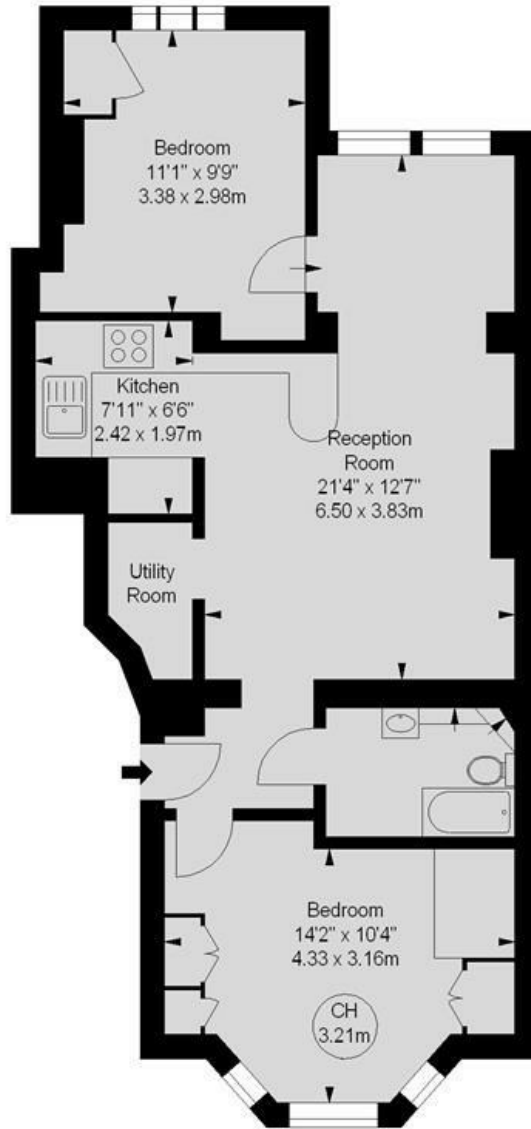
£650,000

- Two Double Bedrooms
- Light and Airy
- Period Property
- Moments from Barons Court & Hammersmith tube station
- Open Plan Kitchen Living
- Raised Ground Floor
- Share of Freehold

Edith Road, W14

Approximate gross internal area
657 sq ft / 61.04 sq m

Key :
CH - Ceiling Height



Raised Ground Floor

Illustration For Identification Purposes Only. Not To Scale
*Floorplan Drawn According To RICS Guidelines

Energy Efficiency Rating		Current	Potential
Very energy efficient - lower running costs			
(92 plus) A			
(81-91) B			
(69-80) C		73	79
(55-68) D			
(39-54) E			
(21-38) F			
(1-20) G			
Not energy efficient - higher running costs			
England & Wales		EU Directive 2002/91/EC	

Whilst these particulars are believed to be correct, no guarantee can be given for the measurements, appliances or services. It is our recommendation that all are tested. These are not intended to form part of any contract. Tates accept no responsibility for their accuracy.

135 Hammersmith Rd London W14 0QL.
T. 020 7602 6020 F. 020 7602 9522
mail@tatesestates.co.uk
tatesestates.co.uk

Tates (Agents) Ltd. Registered in England and Wales No. 2356337
Registered Office: 4th Floor Imperial House, 15 Kingsway London WC2B 6U

